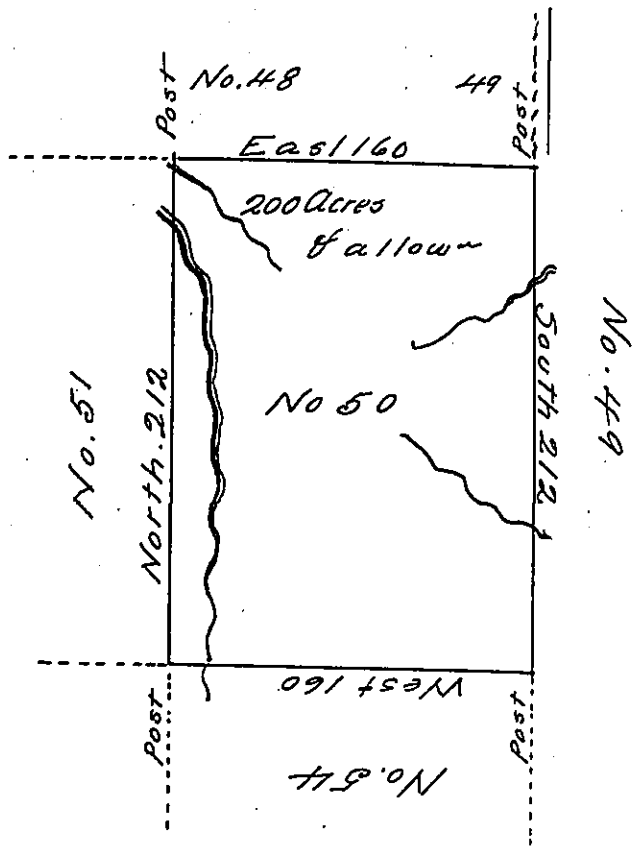


✓



Situate on the Southern Waters of Connoughqueanneasing  
 Creek Between the Eleventh & Twelfth Parallel in that Part  
 of District No 3 to me allotted on the North side of the  
 Ohio Being Part of the Land appropriated for the Rede-  
 -mption of the Certificates of Depreciation &c. Surveyed  
 in June 1785 Pursuant to Instructions from Jnr Lukens Esqr.  
 Surveyor Genl. Dated at Philad. 5<sup>th</sup> March 1785

Nat. Breeding D.S.

IN TESTIMONY that the above is a copy of the original remaining on file in  
 the Department of Internal Affairs of Pennsylvania, made  
 conformably to an Act of Assembly approved the 16th day of  
 February, 1833, I have hereunto set my Hand and caused  
 the Seal of said Department to be affixed at Harrisburg,  
 this twelfth day of March 1904

*Joac B. Brown*  
 Secretary of Internal Affairs.